



**PRODUCT
PERFORMANCE
PASSION**





RAHMAN GROUP

Only few companies in the World, working in the PPE sector, can be proud of such a high level of know-how as the Rahman Group. A global expertise built up step by step, from a perfect domain of the raw materials (Rahman Group is also a leather manufacturer), to the ability of shaping products on the specific customer needs. A Company history marked by new goals each year, always looking into the future, merging in its products different visions, experiences and cultures. Such concepts as internationalization, differentiation and distinctiveness are not just features, but also a mission for the entire Group that is present in all main markets with various production sites and labels.

Perf comes from this universe. It is a combination of Italian design and cutting-edge technologies, that create performances in each Country of the World. This is the essence of the Rahman Group, a wide and strong team of people, where the different cultures, experiences and technologies create first class products.



RAHMAN HEAD OFFICE AT NOIDA

GROUP OPERATIVE SITES RAHMAN INDUSTRIES LIMITED

INDIA

UAE

CHINA

FRANCE

GERMANY

BELGIUM

CHUCK REPUBLIC

SPAIN

ITALY

SOUTH AFRICA

UK



Contents

PERF Range

Pg no. 4 to 59

Zero Gravity (Collection)
Predator (Collection)
Crossover (Collection)
Rain & Cold (Mount)
Metropolis (Collection)
Elite (Collection)
Rain Cold (Line P12)
Elite ESD
Chem&Food (Collection)
Bases (Collection)
DDR (Collection)

Lemaitre Range

Pg no. 56 to 89

Safetix by Lemaitre Range

Pg no. 90 to 102

EYE Protection

Pg no. 104 to 119

Gloves & Accessories

Pg no. 126 to 129

Welding & Heat Resistance
Mechanical & Material Handling

Head Protection

Pg no. 130 to 139

Xprss-P
Orbit-R

Clothing

Pg no. 140 to 155

Workwear
Food Industry Workwear
Food and Pharma
HI-VIS



COMPANY VALUES

A name that reminds to the essence that inspired everything:
Passion for Performances.

A team of experts that have a vision, not just making shoes but creating solutions.
It isn't only a work; it is the search for the perfection in every detail.
In engineering, designing, production. Never looking for the minimal
requirements. Perf create new forms, technologies, styles, establishing higher
standards each time.

To experiment and innovate with just one aim: to improve performances every
day.

Our collections are dedicated to the heroes of our times, to all workers. From the
ones building skyscrapers, roads, cars and ships or extracting oil and gas in the
most extreme environments, to the people that make our life more comfortable.

This is the PERF World. Experience in product and passion.

Making the working days simply better.



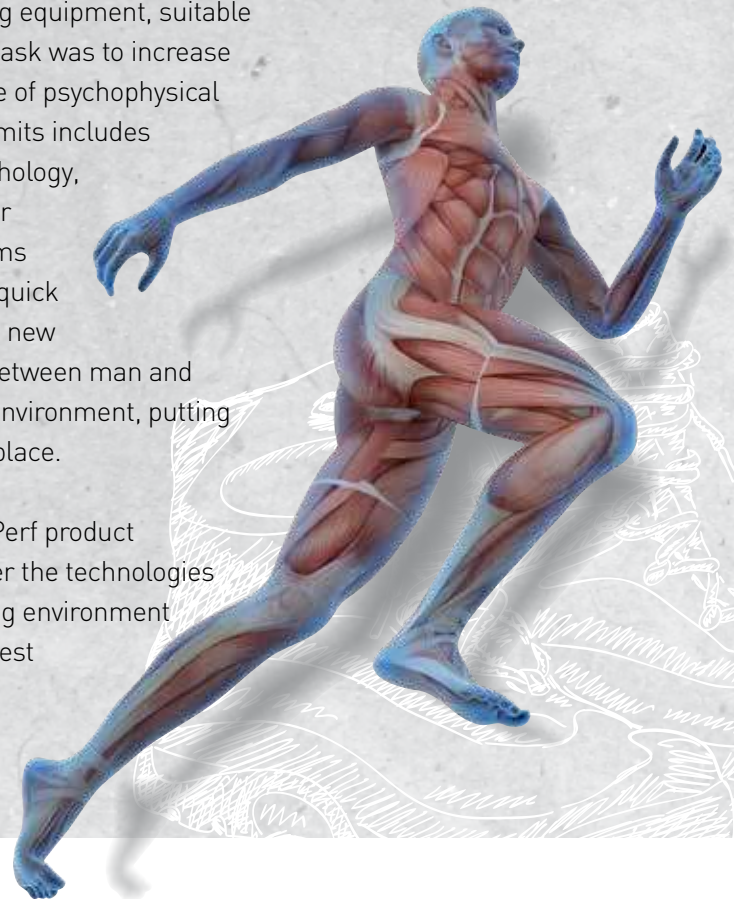


ANATOMY AND COMFORT

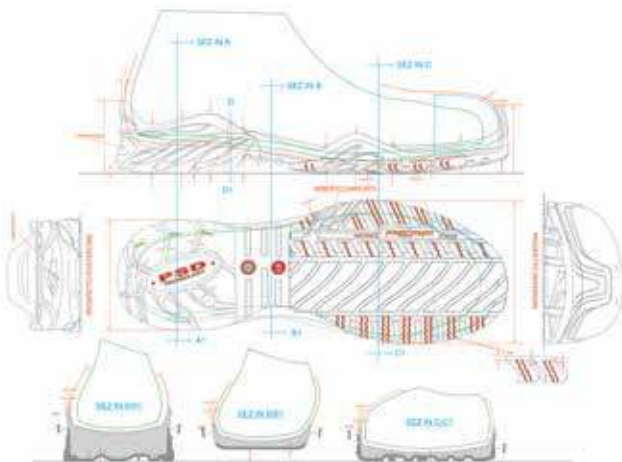
DESIGN & COMFORT

The rapid technological growth of last century allowed the creation of a more performing equipment, suitable to support the human limits. Its task was to increase and improve the work at the edge of psychophysical possibilities. The study of such limits includes knowledge of anthropology, psychology, engineering, physiology and other Sciences to elaborate new systems and technologies. Afterward the quick industrial development will bring new challenges to the relationships between man and machine, man and the working environment, putting safety and efficiency on the first place.

These are the fundamentals of Perf product development. Combining together the technologies to reduce the risks on the working environment with the best design, for the highest comfort.



ERGONOMIC=DESIGN+TECHNOLOGY



PERFOR collection



XK komfort technology

- XL TOE CAP COMPOSITE EXTRA LARGE
- XL ERGONOMIC
- METAL FREE LINE
- ADVANCED SLIP RESISTANT PU SOLE

TECHONLOGY "POSITIVE SHOCK DEVICE"

PSD
TECHNOLOGY



LINING

extremely breathable polyamide lining. It absorbs moisture quickly and ensures a greater comfort during the whole working day. Optimal resistance to abrasion and anti-bacterial.

bdry

Non-magnetic **TOE CAP** of composite materials. 50% lighter than steel.

XLTAP
DEFENCE

PERF SOLUTION FOR YOUR FEET COMFORT

PERF creates safety shoes that can be provided with optional orthotic insoles in accordance with the norm BGR 191.

BGR191

The person who suffers from foot pathologies and orthopaedic malformations can continue comfortably working activity by wearing safety shoes provided with orthotic insoles tailored to their foot and be sure that all normative safety requirements are fulfilled and protection against negative effects of false postures and pain is guaranteed. The logo BGR 191 is placed on the safety shoes where it is possible to place optional orthotic insoles.



LEOPARD S3 SRC

UPPER	Leather
LINING	bdry
TOE CAP	XLTAP DEFENCE non metallic
MIDSOLE	Shield PRO non metallic
FOOTBED	PSD
SOLE	PREDATOR PU/PU
SIZE	36-47

BGR191



LION ESD S1 P SRC, ESD

UPPER	Leather and Dry-Tech, 3D highly breathable fabric. With anti-abrasion leather.
LINING	bdry
TOE CAP	XLTAP DEFENCE non metallic
MIDSOLE	Shield PRO non metallic
FOOTBED	PSD
SOLE	PREDATOR PU/PU
SIZE	36-47



BGR191



JAGUAR S1 P SRC

UPPER	Suede leather
LINING	bdry
TOE CAP	XLTAP DEFENCE non metallic
MIDSOLE	Shield PRO non metallic
FOOTBED	PSD
SOLE	PREDATOR PU/PU
SIZE	36-47

BGR191



SUITABLE FOR ANY CONDITION
LIGHT AND TOUGH
COMPOSITE TOE CAP

CROSSOVER
collection

TECHNOLOGY



VIBRAM® SOLE

- HIGHER RUBBER PROFILE FOR EXTREME CONDITION USE
- WATER RESISTANT UPPER AND HEAT RESISTANT SOLE
- PSD TECHNOLOGY AND PSD ADDITIONAL FOOTBED
- PU/VIBRAM® RUBBER



Vibram® and the Vibram® logo are trademarks of Vibram® SpA

POSITIVE SHOCK DEVICE TECHNOLOGY

Optimal absorption of strains on the vertebral column thanks to the use of expanded PU, combined with memory effect and concaved surface.

FOOTBED PSD

INSOLE - PU 10 mm expanded, covered with antibacterial fabric.

Non-magnetic **TOECAP**, of composite materials. 50% lighter than steel.

MIDSOLE Non-magnetic, puncture resistant composite fabric plate. It is 40% lighter and more flexible than steel plate and at the same time guarantees an optimal protection covering 100% of the foot surface.

LINING extremely breathable polyamide lining. It absorbs moisture quickly and ensures a greater comfort during the whole working day. Optimal resistance to abrasion and anti-bacterial.



SOLE CROSSOVER



ADHERENCE

TEST RESULTS "SLIP RESISTANCE" - Standard EN ISO 20345:2011, requirement SRC

SRA - Ceramic testing ground with detergent

Flat sole: 0,46 [Standard value: $\geq 0,32$]

44% higher performance than minimum required values

With a heel incline: 0,34 [Standard value: $\geq 0,28$]

22% higher performance than minimum required values

PROLONGED SERVICE LIFE

Abrasion resistance - Standard EN ISO 20345:2011

Standard value: $< 150 \text{ mm}^3$

Test result: 50 mm^3

33% higher performance than minimum required values



FIGHTER HIGH S3 HRO SRC

UPPER	Water resistant full grain leather
LINING	bdry
TOE CAP	TAP DEFENCE non metallic
MIDSOLE	Shield PRO non metallic
FOOTBED	PSD
SOLE	CROSSOVER PU/rubber Vibram®
SIZE	38-47



FIGHTER LOW S3 HRO SRC

UPPER	Water resistant full grain leather
LINING	bdry
TOE CAP	TAP DEFENCE non metallic
MIDSOLE	Shield PRO non metallic
FOOTBED	PSD
SOLE	CROSSOVER PU/rubber Vibram®
SIZE	38-47



CROSSOVER



SCUD S3 HRO SRC

UPPER	Water resistant full grain leather
LINING	bdry
TOE CAP	TAP DEFENCE non metallic
MIDSOLE	Shield PRO non metallic
FOOTBED	PSD
SOLE	CROSSOVER PU/rubber Vibram®
SIZE	38-47

Not in stock. Available upon request

HARRIER S3 HRO SRC



UPPER	Water resistant full grain leather
LINING	bdry
TOE CAP	TAP DEFENCE non metallic
MIDSOLE	Shield PRO non metallic
FOOTBED	PSD
SOLE	CROSSOVER PU/rubber Vibram®
SIZE	38-47





PERF 

WELDER S3 HRO SRC

UPPER	Water resistant leather. Lacets protection with velcro binding
LINING	bdry
TOE CAP	TAP DEFENCE non metallic
MIDSOLE	Shield PRO non metallic
FOOTBED	PSD
SOLE	CROSSOVER PU/Vibram® rubber, contact heat resistant up to 300 °C
SIZE	38-47

SPECIFIC FOR WELDING





OPTIMAL THERMAL COMFORT, EVEN AT VERY LOW TEMPERATURES



EXTREME PERFORMANCES FOR EXTREME CONDITIONS

HIGHER VIBRAM® RUBBER PROFILE FOR EXTREME USAGE CONDITIONS

RAIN & COLD
Vibram

TECHNOLOGY

PROTECTION FROM WATER

- Innovative waterproof breathable membrane
- Microporous structure, strong, resistant, light and ultrathin
- Integral part of the upper, joined with an abrasion resistant lining



WR – completely water resistant shoe

PERF shoes test with PERF-DRY120 membrane:

minimum 120 minutes (required value: 80 minutes)

water resistance performance 67 % higher than minimum required values

WATERPROOF

PROTECTION FROM COLD UP TO -30°C

- insulating material, thin, light, breathable, made of a microfiber network built to trap air
- maintains the inner shoe perfect thermal microclimate for long hours of hard wearing
- prevents heat losses and keeps feet warm even in damp conditions



Thinsulate®, Thinsulate® Ultra Insulation and the logos are the trademarks of 3M Company.



PERF®

KITZBUEHEL WR S3 WR HRO SRC



UPPER	Water resistant nubuck leather, high visibility rear insert
WATERPROOF	PERF-DRY120 membrane, totally waterproof and breathable
LINING	bdry
TOE CAP	TAP DEFENCE non metallic
MIDSOLE	Shield PRO non metallic
FOOTBED	PSD
SOLE	CROSSOVER PU/rubber Vibram®
SIZE	38-47

WATERPROOF
PERF-DRY120 

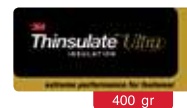
RAIN & COLD
Vibram



BOZEN S3 CI HRO SRC

UPPER	Water resistant full grain leather, pull upfinishing
LINING	bdry eThinsulate™ Ultra Insulation 400 gr, thermo-insulating fabric effective up to 30°C below zero
TOE CAP	TAP DEFENCE non metallic
MIDSOLE	Shield PRO non metallic
FOOTBED	PSD
SOLE	CROSSOVER PU/rubber Vibram®
SIZE	38-47

Not in stock. Available upon request

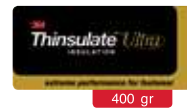


PROTECTION FROM
COLD UP TO -30°C

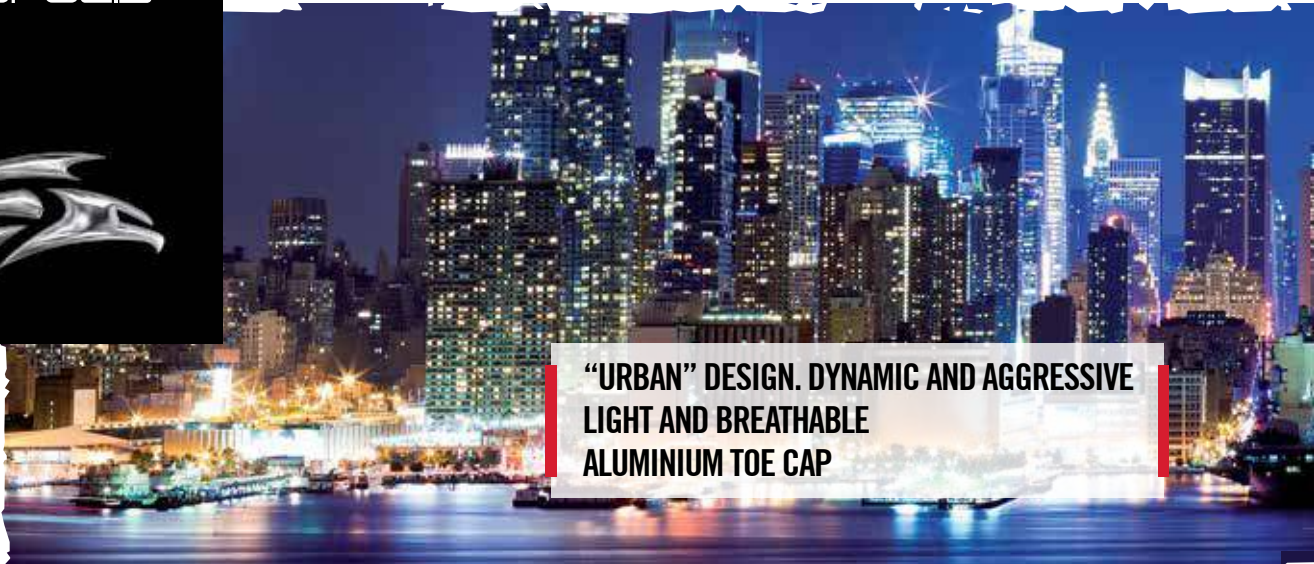


INTRUDER S3 CI HRO SRC

UPPER	Water resistant full grain leather, pull upfinishing
LINING	bey eThinsulate™ Ultra Insulation 400 gr, thermo-insulating fabric effective up to 30°C below zero
TOE CAP	TAP DEFENCE non metallic
MIDSOLE	Shield PRO non metallic
FOOTBED	PSD
SOLE	CROSSOVER PU/rubber Vibram®
SIZE	38-47



**PROTECTION FROM
COLD UP TO -30°C**



**“URBAN” DESIGN. DYNAMIC AND AGGRESSIVE
LIGHT AND BREATHABLE
ALUMINIUM TOE CAP**

METROPOLIS
collection

TECHNOLOGY



METROPOLIS SOLE PU/PTU

- **FLAT SOLE FOR A BETTER STABILITY**
- **HIGH SLIP RESISTANCE PERFORMANCE**

TEST RESULTS “SLIP RESISTANCE” - Standard EN ISO 20345:2011, requirement SRC

SRA - Ceramic testing ground with detergent

flat sole: 0,39 [Standard value \geq 0,32]

with a heel incline: 0,30 [Standard value: \geq 0,28]

SRB - Steel testing ground with glycerine

flat sole: 0,28 [Standard value: \geq 0,18]

with a heel incline: 0,14 [Standard value: \geq 0,13]

MULTIPOWER

FOOTBED Assures a cushioning effect on all the foot surface thanks to the multiple 3D-structure in soft PU. Antistatic, breathable, lined with anti-abrasion fabric.

ALU-S aluminium 200J **TOE CAP ALU-S** Ergonomic shape to improve comfort and shoe design. 50% lighter than steel toecaps.

SOLE ANTI-PERFORATION

- Non-magnetic, made of composite materials
- 40% lighter and more flexible than steel
- Optimal protection, covering 100% of the foot surface



ALU-S

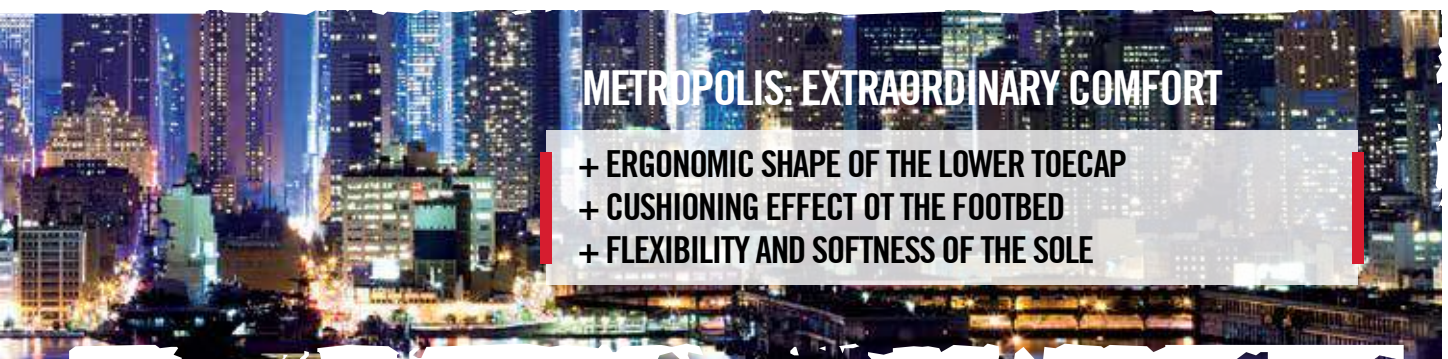


Shield PRO



DALLAS S3 SRC

UPPER	Water resistant full vintage leather
LINING	3D breathable fabric
TOE CAP	ALU-S
MIDSOLE	Shield PRO non metallic
FOOTBED	MULTIPOWER
SOLE	METROPOLIS PU/TPU
SIZE	38-47



METROPOLIS: EXTRAORDINARY COMFORT

- + ERGONOMIC SHAPE OF THE LOWER TOECAP
- + CUSHIONING EFFECT OF THE FOOTBED
- + FLEXIBILITY AND SOFTNESS OF THE SOLE



BOSTON HIGH

S3 SRC

UPPER	Water resistant full grain leather
LINING	3D breathable fabric
TOE CAP	ALU-s
MIDSOLE	Shield PRO non metallic
FOOTBED	MULTIPOWER
SOLE	METROPOLIS PU/TPU
SIZE	38-47

BOSTON LOW

S3 SRC

UPPER	Water resistant full grain leather
LINING	3D breathable fabric
TOE CAP	ALU-s
MIDSOLE	Shield PRO non metallic
FOOTBED	MULTIPOWER
SOLE	METROPOLIS PU/TPU
SIZE	38-47





PERF 



HERCULES

S1

UPPER	Buff Apollo Grain Leather
LINING	Extremely Breathable Anti-bacterial Polyamide Lining
TOE CAP	Steel Toe Cap 200 joules
FOOTBED	Insole PU 10mm Expanded, Covered With Antibacterial Fabric
SOLE	PU Double Density
SIZE	38-47

KEY SOUTH

S1P SRC

UPPER	Suede leather
LINING	3D breathable fabric
TOE CAP	ALU-s
MIDSOLE	Shield PRO non metallic
FOOTBED	MULTIPOWER
SOLE	METROPOLIS PU/TPU
SIZE	38-47





TOTALLY METAL FREE
 LIGHT AND TOUGH
 IMPROVED ENERGY ABSORTION ON THE HEEL REGION
 PU EXTRA INSOLE

E·LITE
 collection

TECHNOLOGIE



E-LITE SOLE

- MAXIMUM STABILITY
- INCREASED COEFFICIENT OF SLIP RESISTANCE
- DOUBLE DENSITY PU WITH PSD INSERT

POSITIVE SHOW DEVICE TECHNOLOGY

Optimal absorption of strains on the vertebral column thanks to the use of expanded PU, combined with memory effect concaved surface.



FOOTBED PSD

INSOLE - PU 10 mm expanded, covered with antibacterial fabric.



Non-magnetic **TOE CAP** of composite materials. 50% lighter than steel.



MIDSOLE Non-magnetic, puncture resistant composite fabric plate. It is 40% lighter and more flexible than steel plate and at the same time guarantees an optimal protection covering 100% of the foot surface.



LINING extremely breathable polyamide lining. It absorbs moisture quickly and ensures a greater comfort during the whole working day. Optimal resistance to abrasion and anti-bacterial.



MATERIAL light and ultra-breathable synthetic fabric, maintains the internal microclimate at the ideal level even at high temperatures. Guarantees exceptional resistance to abrasion.



LEATHER Water resistant full grain leather, ideal against oils and hydrocarbons.



SOLE E-LITE PU/PU

ADHERENCE

Test results "Slip resistance" – Standard EN ISO 20345:2011 Requirement SRC (SRA+SRB)

SRA – Ceramic testing ground with detergent

flat shoe: 0,46 (Standard value: > 0,32) with a heel incline: 0,33 (Standard value: > 0,28)

ABRASION RESISTANCE

Standard EN ISO 20345:2011

Standard value: < 150 mm³

Test result: 45 mm³



ENDURANCE HIGH S3 SRC

UPPER	Water resistant full grain and abrasion resistant leather
LINING	bdry
TOE CAP	TAP DEFENCE non metallic
MIDSOLE	Shield PRO non metallic
FOOTBED	PSD
SOLE	E-LITE PU/PU
SIZE	36-48

ENDURANCE LOW S3 SRC

UPPER	Water resistant full grain and abrasion resistant leather
LINING	bdry
TOE CAP	TAP DEFENCE non metallic
MIDSOLE	Shield PRO non metallic
FOOTBED	PSD
SOLE	E-LITE PU/PU
SIZE	36-48



BGR191

E·LITE



SNIPER BROWN S3 SRC



UPPER	Water resistant nubuck leather
LINING	bdry
TOE CAP	TAP DEFENCE non metallic
MIDSOLE	Shield PRO non metallic
FOOTBED	PSD
SOLE	E·LITE PU/PU
SIZE	36-47





SNIPER BLACK

S3 SRC



UPPER	Water resistant nubuck leather
LINING	bdry
TOE CAP	TAP DEFENCE non metallic
MIDSOLE	Shield PRO non metallic
FOOTBED	PSD
SOLE	E-LITE PU/PU
SIZE	36-47

BGR191



E·LITE



TYPHOON HIGH S3 SRC

UPPER	Water resistant nubuck leather with anti-abrasion leather
LINING	bdry
TOE CAP	TAP DEFENCE non metallic
MIDSOLE	Shield PRO non metallic
FOOTBED	PSD
SOLE	E·LITE PU/PU
SIZE	36-47

BGR191

TYPHOON LOW S3 SRC

UPPER	Water resistant nubuck leather with anti-abrasion leather
LINING	bdry
TOE CAP	TAP DEFENCE non metallic
MIDSOLE	Shield PRO non metallic
FOOTBED	PSD
SOLE	E·LITE PU/PU
SIZE	36-47



BGR191



TORNADO HIGH S3 SRC

UPPER	Water resistant nubuck leather
LINING	bdry
TOE CAP	TAP DEFENCE non metallic
MIDSOLE	Shield PRO non metallic
FOOTBED	PSD
SOLE	E-LITE PU/PU
SIZE	36-48

BGR191

TORNADO LOW S3 SRC

UPPER	Water resistant nubuck leather
LINING	bdry
TOE CAP	TAP DEFENCE non metallic
MIDSOLE	Shield PRO non metallic
FOOTBED	PSD
SOLE	E-LITE PU/PU
SIZE	36-48

BGR191



E·LITE



HURRICANE S1P SRC

UPPER	Nubuck leather. Double velcro bindings
LINING	bdry
TOE CAP	TOP DEFENCE non metallic
MIDSOLE	Shield PRO non metallic
FOOTBED	PSD
SOLE	E·LITE PU/PU
SIZE	36-47





GALE S1P SRC

UPPER	Leather. Double velcro bindings
LINING	bdry
TOE CAP	TOP DEFENCE non metallic
MIDSOLE	Shield PRO non metallic
FOOTBED	PSD
SOLE	E-LITE PU/PU
SIZE	36-47





BLACKFIRE HIGH S1P SRC



UPPER	Suede and abrasion resistant leather with nylon inserts
LINING	bdry
TOE CAP	TAP DEFENCE non metallic
MIDSOLE	Shield PRO non metallic
FOOTBED	PSD
SOLE	E-LITE PU/PU
SIZE	36-47

BLACKFIRE LOW S1P SRC

UPPER	Suede and abrasion resistant leather with nylon inserts
LINING	bdry
TOE CAP	TAP DEFENCE non metallic
MIDSOLE	Shield PRO non metallic
FOOTBED	PSD
SOLE	E-LITE PU/PU
SIZE	36-47





BLIZZARD S1P SRC



UPPER	Perforated leather
LINING	bdry
TOE CAP	TAP DEFENCE non metallic
MIDSOLE	Shield PRO non metallic
FOOTBED	PSD
SOLE	E-LITE PU/PU
SIZE	36-47

FORCE 3 S1P SRC

UPPER	Perforated suede leather
LINING	bdry
TOE CAP	TAP DEFENCE non metallic
MIDSOLE	Shield PRO non metallic
FOOTBED	PSD
SOLE	E-LITE PU/PU
SIZE	38-47





PATROL S1P SRC



UPPER	Full grain leather with abrasion resistant technical fabric inserts. YKK waterproof zip for side easy pull on
LINING	bdry
TOE CAP	TAP DEFENCE non metallic
MIDSOLE	Shield PRO non metallic
FOOTBED	PSD
SOLE	E-LITE PU/PU
SIZE	38-47

Not in stock. Available upon request

DESERT S1P SRC

UPPER	Full grain leather with abrasion resistant technical fabric inserts. YKK waterproof zip for side easy pull on
LINING	bdry
TOE CAP	TAP DEFENCE non metallic
MIDSOLE	Shield PRO non metallic
FOOTBED	PSD
SOLE	E-LITE PU/PU
SIZE	38-47



Not in stock. Available upon request



KANGAROO

S1

UPPER	Viscos with non woven lamination
LINING	Non woven lamination
TOE CAP	Leather with rubber lamination
FOOTBED	Moulded
SOLE	4 x 4 SDPU
OUTSOLE TECH	Parabolic
SIZE	38-47

CHEETAH

S1

UPPER	Viscos with non woven lamination
LINING	Non woven lamination
TOE CAP	Leather with rubber lamination
FOOTBED	Moulded
SOLE	4 x 4 SDPU
OUTSOLE TECH	Parabolic
SIZE	38-47





W1



UPPER	Buff Breathable Leather
LINING	bdry
TOE CAP	Hard Toe Puff
FOOTBED	Moulded
SOLE	4 x 4 SDPU
OUTSOLE TECH	Parabolic
SIZE	38-47

W3

UPPER	Buff Breathable Leather
LINING	bdry
TOE CAP	Hard Toe Puff
FOOTBED	Moulded
SOLE	4 x 4 SDPU
OUTSOLE TECH	Parabolic
SIZE	38-47



PERF[®]



W2



UPPER	Buff Breathable Leather with camouflage material
LINING	bdry
TOE CAP	Hard Toe Puff
FOOTBED	Moulded
SOLE	4 x 4 SDPU
OUTSOLE TECH	Parabolic
SIZE	38-47



RICHTER S3 SRC

UPPER	Water resistant leather. Side tabs for quick and easy pull on.
LINING	bdry
TOE CAP	TAP DEFENCE non metallic
MIDSOLE	Shield PRO non metallic
FOOTBED	PSD
SOLE	E·LITE PU/PU
SIZE	38-47



NORFOLK S3 SRC

UPPER	TOP37 water resistant full grain leather, ideal against oils and hydrocarbons. Side tabs for quick and easy pull on.
LINING	bdry
TOE CAP	TAP DEFENCE non metallic
MIDSOLE	Shield PRO non metallic
FOOTBED	PSD
SOLE	E·LITE PU/PU
SIZE	36-47



PERFORM®

COMMANDER S3 HRO SRC



UPPER	Water resistant full grain leather. Side tabs for quick and easy pull on
LINING	bdry
TOE CAP	TAP DEFENCE non metallic
MIDSOLE	Shield PRO non metallic
FOOTBED	PSD
SOLE	CROSSOVER PU/caoutchouc Vibram®
SIZE	38-47





EXTREME PERFORMANCE FOR EXTREME
WEATHER CONDITIONS
OPTIMAL THERMAL COMFORT, EVEN AT
VERY LOW TEMPERATURES
SOLE E-LITE PU BI-DENSITY

RAIN & COLD E-Lite PU

TECHNOLOGY

PROTECTION FROM WATER

- Innovative waterproof breathable membrane
- Microporous structure, strong, resistant, light and ultrathin
- Integral part of the upper, joined with an abrasion resistant lining

PERF-DRY120

WR – completely water resistant shoe

PERF shoes test with PERF-DRY120 membrane:
minimum 120 minutes (required value: 80 minutes)
water resistance performance 67% higher than minimum required
values

WATERPROOF



ZERMATT WR

S3 WR SRC

UPPER	Water resistant nubuck leather, high visibility rear insert.
WATERPROOF	PERF-DRY120 membrane, totally waterproof and breathable.
LINING	bdry
TOE CAP	TAP DEFENCE non metallic
MIDSOLE	Shield PRO non metallic
FOOTBED	PSD
SOLE	e-LITE PU/PU
SIZE	38-47



WATERPROOF

PERF-DRY120



ESD = Electro Static Discharge
 EPA = ESD Protected Areas. The areas where the ESD protection devices are mandatory required to be worn



Ideal for the automotive industry and for traditional industrial and service sectors, when there is a necessity to curb the build-up of static electricity. PERF ESD/EPA safety footwear dissipate electrostatic charge to ground, thus protecting both wearers and sensitive electronic components.

A shoe is referred to as an ESD/EPA shoe if the contact resistance is within the recommended range of $7,5 \times 10^5$ e $3,5 \times 10^7$ Ohm. The contact resistance of ESD/EPA shoes lies within the lower antistatic range of shoes for general industrial application. PERF ESD/EPA footwear have to be worn when the electrostatic charge needs to be dissipated to ground.

E·LITE ESD

ENDURANCE ESD S3 SRC, ESD

UPPER	Water resistant full grain leather and abrasion resistant leather.
LINING	bdry
TOE CAP	TAP non metallic
MIDSOLE	Shield PRO non metallic
FOOTBED	PSD
SOLE	E·LITE PU/PU
SIZE	36-47



HURRICANE ESD S1P SRC, ESD

UPPER	Nubuck. Double velcro bindings
LINING	bdry
TOE CAP	TAP non metallic
MIDSOLE	Shield PRO non metallic
FOOTBED	PSD
SOLE	E·LITE PU/PU
SIZE	36-47





BLACKFIRE HIGH ESD

S1P SRC, ESD



UPPER	Suede and abrasion resistant leather with nylon inserts.
LINING	bdry
TOE CAP	TAP DEFENCE non metallic
MIDSOLE	Shield PRO non metallic
FOOTBED	PSD
SOLE	E-LITE PU/PU
SIZE	36-47

Not in stock. Available upon request



BLACKFIRE LOW ESD

S1P SRC, ESD



UPPER	Suede and abrasion resistant leather with nylon inserts.
LINING	bdry
TOE CAP	TAP DEFENCE non metallic
MIDSOLE	Shield PRO non metallic
FOOTBED	PSD
SOLE	E-LITE PU/PU
SIZE	36-47

Not in stock. Available upon request





IDEAL FOR FOOD AND AGRICULTURAL INDUSTRIES, PHARMACEUTICAL AND HEALTH SECTORS, CONTROLLED ENVIRONMENTS
FULFILS ALL HYGIENE, CLEANLINESS AND SECURITY REQUIREMENTS

CHEM & FOOD collection

TECHNOLOGY



SOLE KEM PU BI-DENSITY

- FLAT SOLE FOR A BETTER STABILITY
- OPTIMAL ANTI-SLIP PERFORMANCE, EVEN ON DIRTY AND GREASY SURFACES

Test results "Slip resistance" (EN ISO 20345:2011 – Requirement SRC)

SRA – Ceramic testing ground with detergent

flat sole: 0,45 [Standard value > 0,32]

with a heel incline: 0,29 [Standard value: > 0,28]

SRB – Steel testing ground with glycerine

flat sole: 0,31 [Standard value: > 0,18]

with a heel incline: 0,16 [Standard value: > 0,13]

MULTIPOWER

FOOTBED Assures a cushioning effect on all the foot surface thanks to the multiple 3D-structure in soft PU. Anti-static, breathable, lined with anti-abrasion fabric.

ALU-S aluminium 200J **TOE CAP** Ergonomic shape to improve comfort and shoe design. 50% lighter than steel toecaps.

LINING extremely breathable polyamide lining. It absorbs moisture quickly and ensures a greater comfort during the whole working day. Optimal resistance to abrasion anti-bacterial.

MICROFIBER synthetic, water resistant, light, soft and breathable. Easily washable.



ALU-S

bdry

FOOD, AGRICULTURAL AND CHEMICAL INDUSTRIES



STILLER
S2 SRC

UPPER	Microfiber water resistant
LINING	bdry
TOE CAP	ALU-s
FOOTBED	MULTIPOWER
SOLE	Kem PU/PU
SIZE	36-47

MIXER
S2 SRC

UPPER	Microfiber water resistant
LINING	bdry
TOE CAP	ALU-s
FOOTBED	MULTIPOWER
SOLE	Kem PU/PU
SIZE	36-47





FLASK S2 SRC

UPPER	Microfiber water resistant
LINING	bdry
TOE CAP	ALU-s
FOOTBED	MULTIPOWER
SOLE	Kem PU/PU
SIZE	36-47

FLASK BLACK S2 SRC

UPPER	Microfiber water resistant
LINING	bdry
TOE CAP	ALU-s
FOOTBED	MULTIPOWER
SOLE	Kem PU/PU
SIZE	36-47





PERF 

SLIDE S2 SRC



UPPER	Microfiber water resistant
LINING	bdry
TOE CAP	ALU-s
FOOTBED	MULTIPOWER
SOLE	Kem PU/PU
SIZE	36-47

SLIDE BLACK S2 SRC

UPPER	Microfiber water resistant
LINING	bdry
TOE CAP	ALU-s
FOOTBED	MULTIPOWER
SOLE	Kem PU/PU
SIZE	36-47





BEAKER S2 SRC

UPPER	Microfiber water resistant
LINING	bdry
TOE CAP	ALU-s
FOOTBED	MULTIPOWER
SOLE	Kem PU/PU
SIZE	36-47

BURG S2 SRC

UPPER	Microfiber water resistant
LINING	bdry
TOE CAP	ALU-s
FOOTBED	MULTIPOWER
SOLE	Kem PU/PU
SIZE	36-47

STANDARD: ASTM F2413-11, I/C 75 - SD
CAN/CSA Z195-14, Grade 1 - SD





MAC S2 SRC

UPPER	Microfiber water resistant
LINING	bdry
TOE CAP	ALU-S
FOOTBED	MULTIPOWER
SOLE	Kem PU/PU
SIZE	36-47

STANDARD: ASTM F2413-11, I/C 75 - SD
CAN/CSA Z195-14, Grade 1 - SD

ORION S2

UPPER	Micro Fibre
LINING	Extremely Breathable Anti-bacterial Polyamide Lining
TOE CAP	Aluminium Toe Cap 200 joules
FOOTBED	Insole PU 10mm Expanded, Covered With Antibacterial Fabric
SOLE	PU Double Density
SIZE	38-47



BASE



Shoes ideal for manufacturing, construction, logistics, outdoor activities. Robust and comfortable,
With stainless steel toe cap and midsole.
Non-slip double density polyurethane sole.

BASES
collection



ASKOLD S3 SRC

UPPER	Waterproof leather
LINING	bdry
TOE CAP	Steel, nickel free
MIDSOLE	Steel, nickel free
FOOTBED	Soft-tex
SOLE	BASES PU/PU
SIZE	36-47



ALVIT S3 SRC

UPPER	Waterproof leather
LINING	bdry
TOE CAP	Steel, nickel free
MIDSOLE	Steel, nickel free
FOOTBED	Soft-tex
SOLE	BASES PU/PU
SIZE	36-47



CORK S1P SRC

UPPER	Suede leather
LINING	bdry
TOE CAP	Steel, nickel free
MIDSOLE	Steel, nickel free
FOOTBED	Soft-tex
SOLE	BASE PU/PU
SIZE	36-47

YMIR S1P SRC



UPPER	Leather
LINING	bdry
TOE CAP	Steel, nickel free
MIDSOLE	Steel, nickel free
FOOTBED	Soft-tex
SOLE	BASES PU/PU
SIZE	36-47



TURBO-S LOW

S1

UPPER	Buff Grain Leather
LINING	Extremely Breathable Anti-bacterial Polyamide Lining
TOE CAP	Steel Toe Cap 200 joules
FOOTBED	Insole PU 10mm Expanded, Covered With Antibacterial Fabric
SOLE	PU Double Density
SIZE	38-47

TURBO-S HIGH

S1

UPPER	Buff Grain Leather
LINING	Extremely Breathable Anti-bacterial Polyamide Lining
TOE CAP	Steel Toe Cap 200 joules
FOOTBED	Insole PU 10mm Expanded, Covered With Antibacterial Fabric
SOLE	PU Double Density
SIZE	38-47





TURBO-S LOW S1

UPPER	Buff Grain Leather
LINING	Extremely Breathable Anti-bacterial Polyamide Lining
TOE CAP	Steel Toe Cap 200 joules
FOOTBED	Insole PU 10mm Expanded, Covered With Antibacterial Fabric
SOLE	PU Double Density
SIZE	38-47

TURBO-S HIGH S1

UPPER	Buff Grain Leather
LINING	Extremely Breathable Anti-bacterial Polyamide Lining
TOE CAP	Steel Toe Cap 200 joules
FOOTBED	Insole PU 10mm Expanded, Covered With Antibacterial Fabric
SOLE	PU Double Density
SIZE	38-47





RAZOR S1

UPPER	Buff Apollo Grain Leather
LINING	Extremely Breathable Anti-bacterial Polyamide Lining
TOE CAP	Steel Toe Cap 200 joules
FOOTBED	Insole PU 10mm Expanded, Covered With Antibacterial Fabric
SOLE	PU Double Density
SIZE	38-47





PB 34
S1

UPPER	Buff Grain Leather
LINING	Extremely Breathable Anti-bacterial Polyamide Lining
TOE CAP	Steel Toe Cap 200 joules
FOOTBED	Insole PU 10mm Expanded, Covered With Antibacterial Fabric
SOLE	PU Double Density
SIZE	38-47

PB 69
S1

UPPER	Buff Grain Leather
LINING	Extremely Breathable Anti-bacterial Polyamide Lining
TOE CAP	Steel Toe Cap 200 joules
FOOTBED	Insole PU 10mm Expanded, Covered With Antibacterial Fabric
SOLE	PU Double Density
SIZE	38-47



DDR



Ideal footwear for construction, foundries, steel mills and all those jobs that require contact with heat sources.

DDR (Double Density Rubber) technology offers greater durability on rough, hard and abrasive terrain, thanks to the high-density SOLE contact, while SOLE midsole in soft rubber provides major comfort and safety.

The SOLE is resistant up to 300 °C of heat for contact and has excellent slip results that guarantee greater safety in hostile work environments.

DDR collection

PB10 S3 HRO SRC



UPPER	Water repellent full grain leather
LINING	Tissue
TOE CAP	Stainless steel
MIDSOLE	Stainless steel
FOOTBED	PSD
SOLE	DDR, Double density rubber
SIZE	38-47

PB10C





PB15CZ



PB15C S3 HRO SRC

UPPER	Water repellent full grain leather.
LINING	Tissue
TOE CAP	Stainless steel
MIDSOLE	Stainless steel
FOOTBED	PSD
SOLE	DDR, Double density rubber
SIZE	38-47

PB16 S3 HRO SRC

UPPER	Water repellent full grain leather
LINING	Tissue
TOE CAP	Stainless steel
MIDSOLE	Stainless steel
FOOTBED	PSD
SOLE	DDR, Double density rubber
SIZE	38-47





SUMMARY OF EUROPEAN LEGISLATION

The European legislation in force since 1993 distinguishes the types of footwear according to the level of risk, establishing the specific requirements for each category.

1. Safety footwear EN ISO 20345:2011

(from the English: SAFETY) These are provided with toe caps made to give protection against knocks up to an energy level of 200 joules and against the risk of crushing with a maximum load of 15.000 N.

2. Occupational footwear 20347:2012

(from the English: OCCUPATIONAL) They are not provided with protective toe caps

The puncture resistant sole guarantees resistance to perforations of up to a load of 1.100 N. The identification symbol is P.

The quick release device must be used in the event of a danger of the infiltration of incandescent parts and/or corrosive liquids.

The safety footwear is Category II – with EC Mark, in compliance with the European Directive EEC 89/686. We are therefore listing the markings which are used by law to allow identification of the specific requirements of the footwear, as well as the data regarding the manufacturer and the date of manufacture.

	EN ISO 20345:2011				EN ISO 20347:2012				Minimum required values EN ISO 20345:2011 EN ISO 20347:2012
	SB	S1	S2	S3	OB	O1	O2	O3	
A Antistatic footwear	-	•	•	•	-	•	•	•	from 1x105 OHM bis 1x109 OHM
E Heel energy absorption	-	•	•	•	-	•	•	•	≥ 20 Joules
WRU Water Resistant Upper	-	-	•	•	-	-	•	•	> 60' - Absorption ≤ 30%
P Pierce Resistant midsole	-	-	-	•	-	-	-	•	≥ 1100 N.
CI Insulation from cold	-	-	-	-	-	-	-	-	Δ Tem. ≤ 10° C.
HI Insulation from heat	-	-	-	-	-	-	-	-	Δ Tem. ≤ 22° C.
C Conductive footwear	-	-	-	-	-	-	-	-	< 1x10 ⁸ OHM
HRO Heat resistance on contact	-	-	-	-	-	-	-	-	at 300° C. for 60" - Does not melt.AN
AN Ankle protection	-	-	-	-	-	-	-	-	Average value > 20 kN
IS Electrical isolation (Dielectric)	-	-	-	-	-	-	-	-	class 00 ou Class 0
WR Water resistance	-	-	-	-	-	-	-	-	No penetration for first 15' (minutes). After 100 lengths no more than 3 cm ² of water must enter (spot)
M Metatarsal protection	-	-	-	-	-	-	-	-	Height after impact > 40 mm (size42)CR
CR Cut resistance of Upper	-	-	-	-	-	-	-	-	Facteur I ≥ 2,5
FO Resistance of to hydrocarbons	-	•	•	•	-	-	-	-	Requirement always present according to EN ISO 20345:2007 and EN ISO 20346:2007, but to specify with initials FO when included in EN ISO 20347:2012

ex OR0

-Requested requirements;---non compulsory requirements: check stamp on footwear

Slip resistance - Norm: EN ISO 2034X:2011 (where X= 5 o 7)

Symbol	Conditions requises prévues par la norme
SRA Testing ground: ceramic Lubricant: cleanser	≥ 0.32 flat footwear ≥ 0.28 footwear with a 7° heel incline
SRB Testing ground: steel Lubrificant: glycerine	≥ 0.18 flat footwear ≥ 0.13 footwear with 7° heel incline
SRC	Both requirements stated above



**WHEN TALENT MEETS UP WITH DESIGN AND TECHNOLOGY
AMAZING THINGS HAPPEN**

PERF HONDA LCR OFFICIAL SPONSOR





PERF ITALIA Srl

Head Office:

Via Barletta, 100
76125 - Trani (BT)
Italia

Marketing Office:

Plot No. 19, Sec-90
Noida - 201304
Dis. Gautam Budh Nagar
Uttar Pardesh (India)



www.perf-safety.com
www.perf4u.com
www.perfitalia.com



india@perf-safety.it



+ 91 7290048417-18

follow us on

